
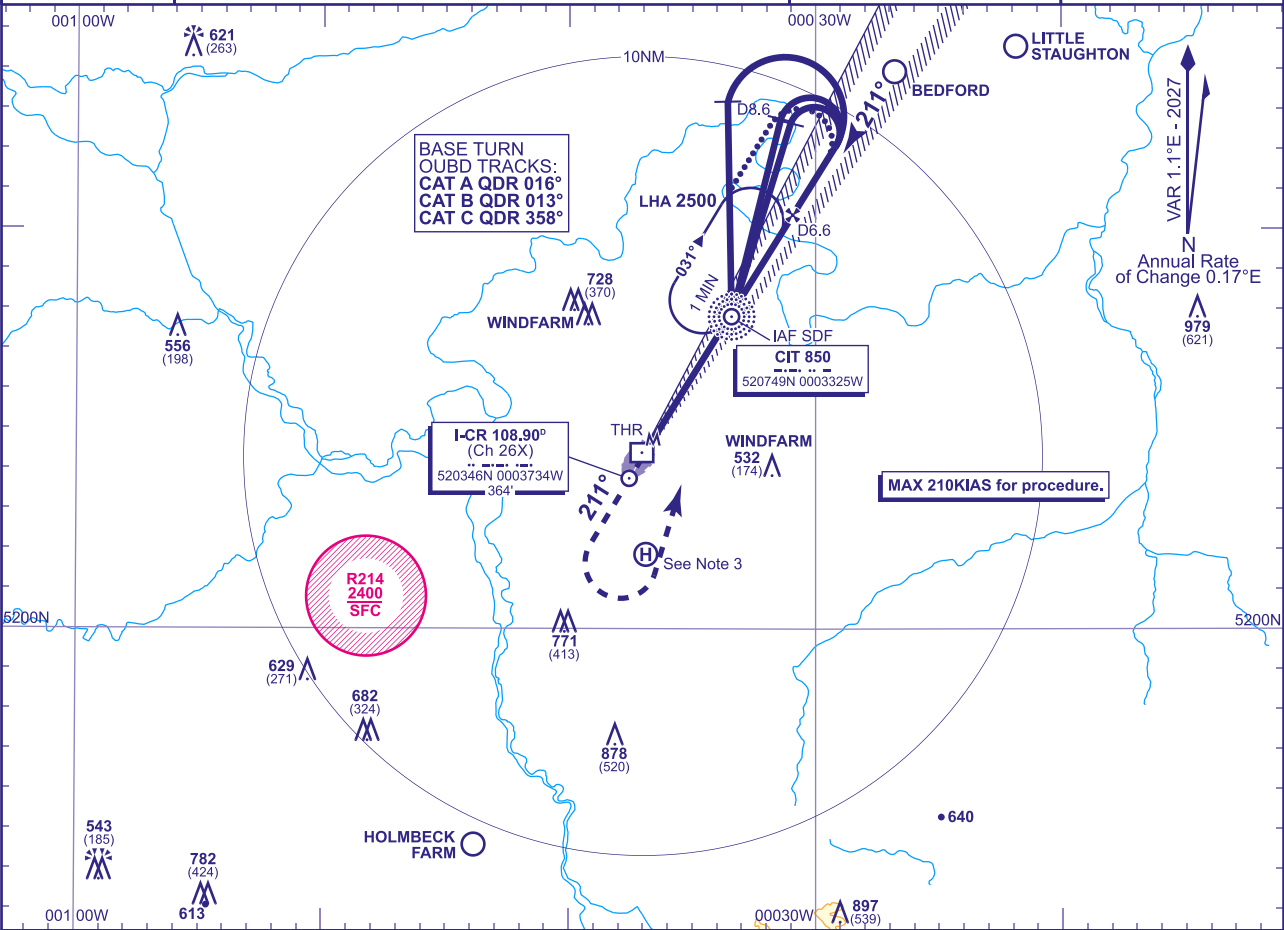


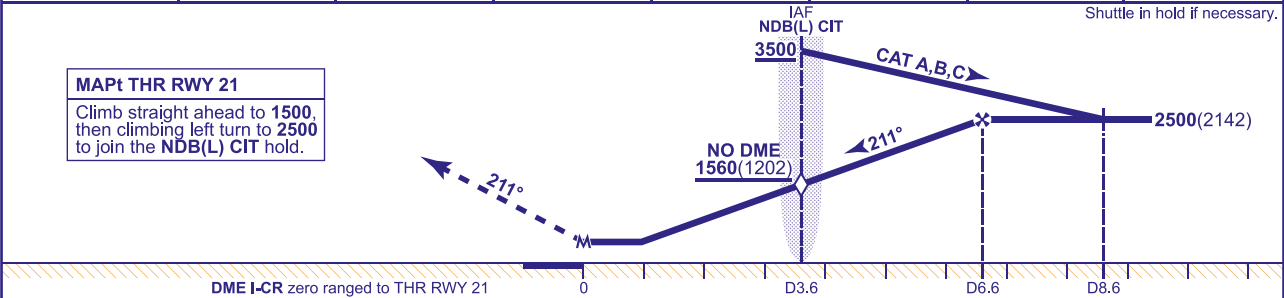
INSTRUMENT APPROACH CHART - ICAO

CRANFIELD
LOC/DME/NDB(L)
RWY 21
(ACFT CAT A,B,C)

 MSA 25NM ARP	APP 122.855	CRANFIELD APPROACH	AD ELEVATION 360	LOC/DME/NDB(L) RWY 21 (ACFT CAT A,B,C)
	TWR 134.930, 122.855	CRANFIELD TOWER	THR ELEVATION 358	
			OBSTACLE ELEVATION 979 AMSL (621) (ABOVE THR)	
			BEARINGS ARE MAGNETIC	
			TRANSITION ALTITUDE 6000	



RECOMMENDED PROFILE Gradient 5.2%, 320FT/NM							
DME I-CR	6	5	4	3.6 (SDF)	3	2	1
ALT(HGT)	2310(1952)	1990(1632)	1680(1322)	1560(1202)	1360(1002)	1040(682)	730(372)



Aircraft Category				DME I-CR zero ranged to THR RWY 21					
Aircraft Category		A	B	C					
OCA (OCH)	Procedure	670(312)	670(312)	670(312)					
VM(C)OCA (OCH AAL)	Total Area	800(440)	970(610)	1150(790)					
					Rate of descent	G/S KT	160	140	120
						FT/MIN	860	750	640
					NDB(L) CIT to MAPt	MIN:SEC	1:25	1:35	1:50
							100	540	2:12
							80	430	2:46

ALTERNATIVE PROCEDURE EXTENDED HOLDING PATTERN
Fly outbound prior to baseturn or extend outbound leg of the NDB(L) CIT holding pattern to D8.6; descending to 2500(2142), then turn right to intercept the LOC. Continue as for main Procedure.

AIRCRAFT UNABLE TO RECEIVE DME
Fly outbound prior to baseturn or extend outbound leg of the NDB(L) CIT hold for 2.5MIN (CAT A); 2MIN (CAT B); 1.5MIN (CAT C) descending to 2500(2142). Then turn right to intercept the LOC. When established inbound descend not below 1560(1202) at the SDF (NDB(L) CIT), then to MDH.

NOTES 1 ATC will normally require holding **not below 3500**. Lowest altitude to commence procedure after missed approach is **2500**.
2 CIT NDB(L) hold restrictions: MAX holding level **5000**, MAX 180KIAS.
3 Occasional helicopter activity at Helimech HeliPad (520152N 0003653W).